

**FEATURES**

- ▶ Industrial Standard 2" X 1" Package
- ▶ Ultra-wide 4:1 Input Voltage Range
- ▶ Fully Regulated Output Voltage
- ▶ I/O Isolation 1500 VDC
- ▶ Operating Ambient Temp. Range -40°C to +85°C
- ▶ Overload and Short Circuit Protection
- ▶ Remote On/Off Control (option)
- ▶ Shielded Metal Case with Insulated Baseplate
- ▶ Designed-in Conducted EMI meets EN55022 Class A & FCC Level A
- ▶ UL/cUL/IEC/EN 60950-1 Safety Approval


**PRODUCT OVERVIEW**

The MINMAX MKW2000 series is a range of isolated 12W DC/DC converter modules featuring fully regulated output voltages and ultra-wide 4:1 input voltage ranges. The product comes in a 2"x 1"x 0.4" metal package with industry standard pinout. An excellent efficiency allows an operating temperature range of -40° to +85°C (with derating).

Typical applications for these converters are in battery operated equipment and instrumentation, distributed power systems, data communication and general industrial electronics.

**Model Selection Guide**

Model Number	Input Voltage (Range) VDC	Output Voltage VDC	Output Current		Input Current		Over Voltage Protection VDC(typ.)	Max. capacitive Load µF	Efficiency (typ.) @Max. Load
			Max.	Min.	@Max. Load	@No Load			
			mA	mA	mA(typ.)	mA(typ.)			%
MKW2021	24 (9 ~ 36)	3.3	2400	240	423	10	3.9	470	78
MKW2022		5	2000	200	508		6.8		82
MKW2023		12	1000	100	595		15		84
MKW2024		15	800	80	595		18		84
MKW2025		±5	±1000	±100	508		±6.8	150#	82
MKW2026		±12	±500	±50	595		±15		84
MKW2027		±15	±400	±40	595		±18		84
MKW2031		3.3	2400	240	212		3.9		470
MKW2032	5	2000	200	254	6.8	82			
MKW2033	12	1000	100	298	15	84			
MKW2034	15	800	80	298	18	84			
MKW2035	±5	±1000	±100	254	±6.8	150#	82		
MKW2036	±12	±500	±50	298	±15		84		
MKW2037	±15	±400	±40	298	±18		84		
MKW2037									

# For each output

**Input Specifications**

Parameter	Model	Min.	Typ.	Max.	Unit
Input Surge Voltage (1 sec. max.)	24V Input Models	-0.7	---	42	VDC
	48V Input Models	-0.7	---	84	
Start-Up Threshold Voltage	24V Input Models	8	8.5	9	
	48V Input Models	14	16	18	
Under Voltage Shutdown	24V Input Models	7	8	8.5	
	48V Input Models	13	15	17	
Short Circuit Input Power	All Models	---	---	3500	mW
Input Filter		Internal LC Type			
Conducted EMI		Compliance to EN 55022,class A and FCC part 15,class A			

**Remote On/Off Control**

Parameter	Conditions	Min.	Typ.	Max.	Unit
Converter On		2.5V ~ 5.5V or Open Circuit			
Converter Off		-0.7V ~ 0.8V or Short Circuit			
Control Input Current (on)	Vctrl = 5.0V	---	---	50	μA
Control Input Current (off)	Vctrl = 0V	---	---	-100	μA
Control Common	Referenced to Negative Input				
Standby Input Current	Nominal Vin	---	---	10	mA

**Output Specifications**

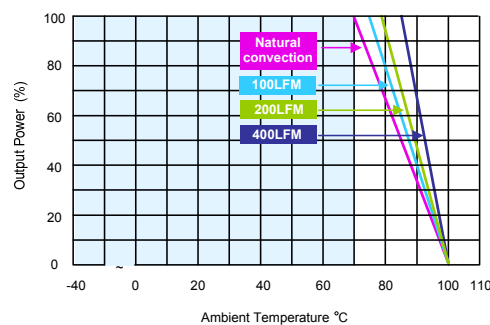
Parameter	Conditions	Min.	Typ.	Max.	Unit
Output Voltage Setting Accuracy		---	---	±1.0	%Vnom.
Output Voltage Balance	Dual Output, Balanced Loads	---	±0.5	±2.0	%
Line Regulation	Vin=Min. to Max. @Full Load	---	±0.1	±0.5	%
Load Regulation	Io=10% to 100% (3.3Vo)	---	±0.8	±1.0	%
	Io=10% to 100%	---	±0.2	±0.5	%
Ripple & Noise	0-20 MHz Bandwidth	---	---	75	mV <sub>P-P</sub>
Transient Recovery Time	25% Load Step Change	---	150	250	μsec
Transient Response Deviation		---	±1.5	±2.5	%
Temperature Coefficient		---	±0.01	±0.02	%/°C
Over Current Protection	Foldback	120	160	---	%
Short Circuit Protection	Continuous, Automatic Recovery				

**General Specifications**

Parameter	Conditions	Min.	Typ.	Max.	Unit
I/O Isolation Voltage	60 Seconds	1500	---	---	VDC
	1 Seconds	1800	---	---	VDC
I/O Isolation Resistance	500 VDC	1000	---	---	MΩ
I/O Isolation Capacitance	100KHz, 1V	---	500	650	pF
Switching Frequency		300	350	400	KHz
MTBF (calculated)	MIL-HDBK-217F@25°C, Ground Benign	700,000			Hours
Safety Approvals	UL/cUL 60950-1 recognition (UL certificate), IEC/EN 60950-1(CB-report)				

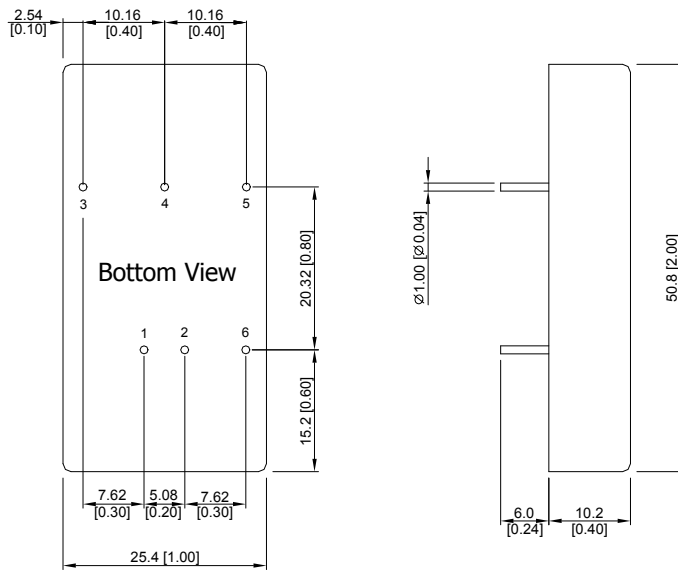
**Environmental Specifications**

Parameter	Conditions	Min.	Max.	Unit
Operating Ambient Temperature Range (See Power Derating Curve)	Natural Convection	-40	+85	°C
Case Temperature		---	+90	°C
Storage Temperature Range		-50	+125	°C
Humidity (non condensing)		---	95	% rel. H
Cooling	Natural Convection			
Lead Temperature (1.5mm from case for 10Sec.)		---	260	°C

**Power Derating Curve**


**Notes**

- 1 Specifications typical at Ta=+25°C, resistive load, nominal input voltage and rated output current unless otherwise noted.
- 2 Transient recovery time is measured to within 1% error band for a step change in output load of 75% to 100%.
- 3 These power converters require a minimum output loading to maintain specified regulation, operation under no-load conditions will not damage these modules; however they may not meet all specifications listed.
- 4 We recommend to protect the converter by a slow blow fuse in the input supply line.
- 5 Other input and output voltage may be available, please contact factory.
- 6 That "natural convection" is about 20LFM but is not equal to still air (0 LFM).
- 7 Specifications are subject to change without notice.

**Package Specifications**
**Mechanical Dimensions**

**Pin Connections**

Pin	Single Output	Dual Output
1	+Vin	+Vin
2	-Vin	-Vin
3	+Vout	+Vout
4	No Pin	Common
5	-Vout	-Vout
6	Remote On/Off	Remote On/Off

- ▶ All dimensions in mm (inches)
- ▶ Tolerance: X.X±0.25 (X.XX±0.01)  
X.XX±0.13 (X.XXX±0.005)
- ▶ Pin diameter  $\varnothing 1.0 \pm 0.05$  (0.04±0.002)

**Physical Characteristics**

Case Size : 50.8x25.4x10.2mm (2.0x1.0x0.4 inches)

Case Material : Metal with Non-Conductive Baseplate

Pin Material : Copper Alloy with Gold Plate Over Nickel Underplate

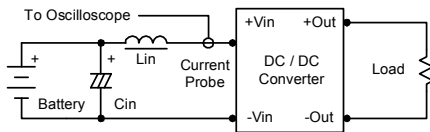
Weight : 31.7g

Order Code Table	
Standard	With Remote On/Off
MKW2021	MKW2021-RC
MKW2022	MKW2022-RC
MKW2023	MKW2023-RC
MKW2024	MKW2024-RC
MKW2025	MKW2025-RC
MKW2026	MKW2026-RC
MKW2027	MKW2027-RC
MKW2031	MKW2031-RC
MKW2032	MKW2032-RC
MKW2033	MKW2033-RC
MKW2034	MKW2034-RC
MKW2035	MKW2035-RC
MKW2036	MKW2036-RC
MKW2037	MKW2037-RC

## Test Setup

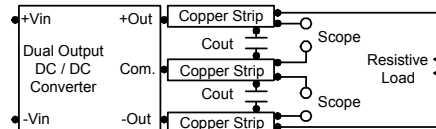
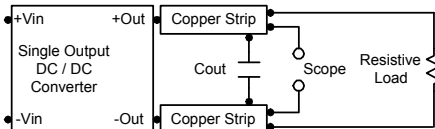
### Input Reflected-Ripple Current Test Setup

Input reflected-ripple current is measured with an inductor  $L_{in}$  (4.7 $\mu$ H) and  $C_{in}$  (220 $\mu$ F, ESR < 1.0 $\Omega$  at 100 KHz) to simulate source impedance. Capacitor  $C_{in}$ , offsets possible battery impedance. Current ripple is measured at the input terminals of the module, measurement bandwidth is 0-500 KHz.



### Peak-to-Peak Output Noise Measurement Test

Use a  $C_{out}$  0.47 $\mu$ F ceramic capacitor. Scope measurement should be made by using a BNC socket, measurement bandwidth is 0-20 MHz. Position the load between 50 mm and 75 mm from the DC/DC Converter.



## Technical Notes

### Remote On/Off

Positive logic remote on/off turns the module on during a logic high voltage on the remote on/off pin, and off during a logic low. Negative logic remote on/off turns the module off during a logic low and on during a logic high. To turn the power module on and off, the user must supply a switch to control the voltage between the on/off terminal and the -Vin terminal. The switch can be an open collector or equivalent. A logic low is -0.7V to 0.8V. A logic high is 2.5V to 5.5V.

The maximum sink current at on/off terminal during a logic low is 100  $\mu$ A. The maximum allowable leakage current of the switch at on/off terminal = 2.5 to 5.5V is 50 $\mu$ A.

### Overcurrent Protection

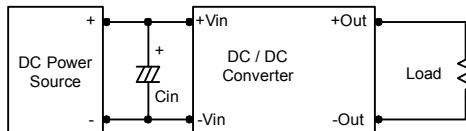
To provide protection in a fault (output overload) condition, the unit is equipped with internal current limiting circuitry and can endure current limiting for an unlimited duration. At the point of current-limit inception, the unit shifts from voltage control to current control. The unit operates normally once the output current is brought back into its specified range.

### Input Source Impedance

The power module should be connected to a low ac-impedance input source. Highly inductive source impedances can affect the stability of the power module.

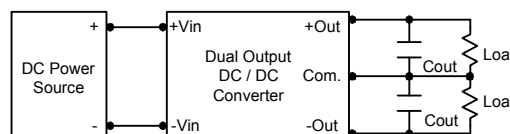
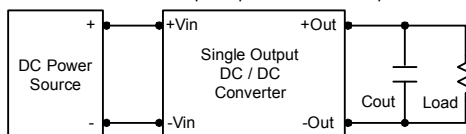
In applications where power is supplied over long lines and output loading is high, it may be necessary to use a capacitor at the input to ensure startup.

Capacitor mounted close to the power module helps ensure stability of the unit, it is recommended to use a good quality low Equivalent Series Resistance (ESR < 1.0 $\Omega$  at 100 KHz) capacitor of a 10 $\mu$ F for the 24V input devices and a 4.7 $\mu$ F for the 48V devices.



### Output Ripple Reduction

A good quality low ESR capacitor placed as close as practicable across the load will give the best ripple and noise performance. To reduce output ripple, it is recommended to use 3.9 $\mu$ F capacitors at the output.



### Maximum Capacitive Load

The MKW2000 series has limitation of maximum connected capacitance at the output. The power module may be operated in current limiting mode during start-up, affecting the ramp-up and the startup time. For optimum performance we recommend 150 $\mu$ F maximum capacitive load for dual outputs and 470 $\mu$ F capacitive load for single outputs. The maximum capacitance can be found in the data sheet.

### Thermal Considerations

Many conditions affect the thermal performance of the power module, such as orientation, airflow over the module and board spacing. To avoid exceeding the maximum temperature rating of the components inside the power module, the case temperature must be kept below 90°C.

The derating curves are determined from measurements obtained in a test setup.

