

FEATURES

- ▶ Industry Standard DIP-16 Package
- ▶ I/O Isolation 4000VAC with Reinforced Insulation, rated for 300Vrms Working Voltage
- ▶ Low Leakage Current < 2μA
- ▶ Operating Ambient Temp. Range -25°C to +80°C
- ▶ Medical EMC Standard meets 4th Edition of EMI EN55011 and EMS EN60601-1-2
- ▶ Medical Safety meets 1xMOPP & 2xMOOP per 3rd Edition of IEC/EN 60601-1 & ANSI/AAMI ES60601-1
- ▶ UL/cUL/IEC/EN 60950-1 Safety Approval & CE Marking


PRODUCT OVERVIEW

The MINMAX MDHU100 series is a new range of 2W DC/DC-converter modules providing a very high I/O-isolation voltage of 4000 VAC. The product comes in a small SMD-package. There are 15 models available with 5V, 12V or 24VDC input and single-or dual-output voltages.

The MDHU100 DC/DC converters offer an economical solution for many applications in instrumentation, industrial controls, medical equipment and everywhere where a certified supplementary- or reinforced insulation system is required to comply with requested safety standards.

Model Selection Guide

Model Number	Input Voltage (Range)	Output Voltage	Output Current		Input Current		Load Regulation	Max. Capacitive Load	Efficiency (typ.)	
			Max.	Min.	@Max. Load	@No Load			@Max. Load	
			mA	mA	mA (typ.)	mA (typ.)			%	
MDHU102	5 (4.5 ~ 5.5)	5	400	8	606	60	12	330	66	
MDHU104		12	165	3	600		10		66	
MDHU105		15	133	2.5	605		10		66	
MDHU108		±12	±83	±1.5	553		10		100#	72
MDHU109		±15	±66	±1	542		10		73	
MDHU112	12 (10.8 ~ 13.2)	5	400	8	253	30	12	330	66	
MDHU114		12	165	3	250		10		66	
MDHU115		15	133	2.5	252		10		66	
MDHU118		±12	±83	±1.5	224		10		100#	74
MDHU119		±15	±66	±1	220		10		75	
MDHU122	24 (21.6 ~ 26.4)	5	400	8	126	15	12	330	66	
MDHU124		12	165	3	125		10		66	
MDHU125		15	133	2.5	126		10		66	
MDHU128		±12	±83	±1.5	112		10		100#	74
MDHU129		±15	±66	±1	110		10		75	

For each output

Input Specifications

Parameter	Model	Min.	Typ.	Max.	Unit
Input Voltage Range	5V Input Models	4.5	5	5.5	VDC
	12V Input Models	10.8	12	13.2	
	24V Input Models	21.6	24	26.4	
Input Surge Voltage (1 sec. max.)	5V Input Models	-0.7	---	9	VDC
	12V Input Models	-0.7	---	18	
	24V Input Models	-0.7	---	30	
Input Filter	All Models	Internal Capacitor			

Output Specifications

Parameter	Conditions	Min.	Typ.	Max.	Unit
Output Voltage Setting Accuracy		---	±2.0	±4.0	%Vnom.
Output Voltage Balance	Dual Output, Balanced Loads	---	±0.1	±1.0	%
Line Regulation	Vin=Min. to Max. @Full Load	---	±1.2	±1.5	%
Load Regulation	Io=20% to 100%	See Model Selection Guide			
Ripple & Noise	0-20 MHz Bandwidth	---	100	150	mV _{P-P}
Temperature Coefficient		---	±0.01	±0.02	%/°C
Short Circuit Protection	0.5 Second Max., Automatic Recovery				

Isolation, Safety Standards

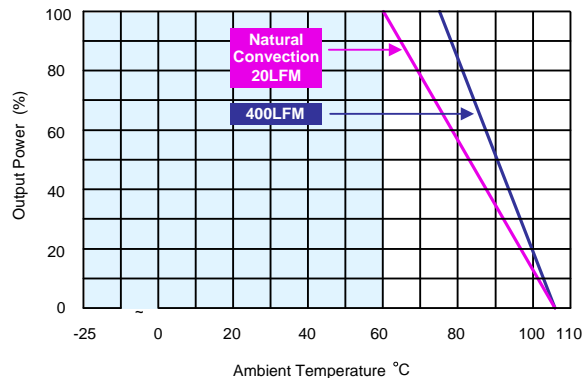
Parameter	Conditions	Min.	Typ.	Max.	Unit
I/O Isolation Voltage	60 Seconds Reinforced insulation, rated for 300Vrms working voltage	4000	---	---	VACrms
Leakage Current	240VAC, 60Hz	---	---	2	μA
I/O Isolation Resistance	500 VDC	10	---	---	GΩ
I/O Isolation Capacitance	100KHz, 1V	---	15	20	pF
Safety Standards	UL/cUL 60950-1, CSA C22.2 No. 60950-1				
	ANSI/AAMI ES60601-1, CAN/CSA-C22.2 No. 60601-1				
	IEC/EN 60950-1, IEC/EN 60601-1 3 rd Edition 1xMOPP & 2xMOOP				
Safety Approvals	UL/cUL 60950-1 recognition (UL certificate), IEC/EN 60950-1 (CB-report)				
	ANSI/AAMI ES60601-1 1xMOPP & 2xMOOP recognition (UL certificate), IEC/EN 60601-1 3 rd Edition (CB-report)				

General Specifications

Parameter	Conditions	Min.	Typ.	Max.	Unit
Switching Frequency		50	80	100	KHz
MTBF (calculated)	MIL-HDBK-217F@25°C, Ground Benign	2,000,000	---	---	Hours

Environmental Specifications

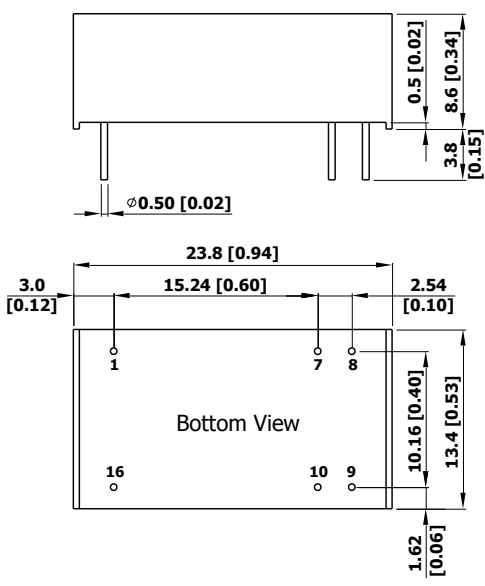
Parameter	Conditions	Min.	Max.	Unit
Operating Ambient Temperature Range (See Power Derating Curve)	Natural Convection	-25	+80	°C
Case Temperature		---	+105	°C
Storage Temperature Range		-50	+125	°C
Humidity (non condensing)		---	95	% rel. H
Cooling	Natural Convection			
Lead Temperature (1.5mm from case for 10Sec.)		---	260	°C

Power Derating Curve


Notes

- 1 Specifications typical at Ta=+25°C, resistive load, nominal input voltage and rated output current unless otherwise noted.
- 2 These power converters require a minimum output loading to maintain specified regulation, operation under no-load conditions will not damage these modules; however they may not meet all specifications listed.
- 3 We recommend to protect the converter by a slow blow fuse in the input supply line.
- 4 Other input and output voltage may be available, please contact factory.
- 5 That "natural convection" is about 20LFM but is not equal to still air (0 LFM).
- 6 Specifications are subject to change without notice.

Package Specifications

Mechanical Dimensions		Pin Connections																						
 <p>The drawing shows a top view of the converter with dimensions: total width 23.8 mm [0.94], distance from left edge to pin 1 center 3.0 mm [0.12], distance between pin 1 and pin 7 center 15.24 mm [0.60], distance from pin 7 center to right edge 2.54 mm [0.10], and pin diameter $\phi 0.50$ mm [0.02]. The bottom view shows dimensions: distance from bottom edge to pin 1 center 10.16 mm [0.40], distance from bottom edge to pin 9 center 13.4 mm [0.53], and distance from bottom edge to pin 16 center 1.62 mm [0.06].</p>		<table border="1" style="width: 100%; border-collapse: collapse;"> <thead> <tr> <th>Pin</th> <th>Single Output</th> <th>Dual Output</th> </tr> </thead> <tbody> <tr> <td>1</td> <td>-Vin</td> <td>-Vin</td> </tr> <tr> <td>7</td> <td>NC</td> <td>NC</td> </tr> <tr> <td>8</td> <td>NC</td> <td>Common</td> </tr> <tr> <td>9</td> <td>+Vout</td> <td>+Vout</td> </tr> <tr> <td>10</td> <td>-Vout</td> <td>-Vout</td> </tr> <tr> <td>16</td> <td>+Vin</td> <td>+Vin</td> </tr> </tbody> </table> <p style="text-align: center;">NC: No Connection</p> <ul style="list-style-type: none"> ▶ All dimensions in mm (inches) ▶ Tolerance: X.X±0.25 (X.XX±0.01) X.XX±0.13 (X.XXX±0.005) ▶ Pin diameter $\phi 0.5 \pm 0.05$ (0.02±0.002) 		Pin	Single Output	Dual Output	1	-Vin	-Vin	7	NC	NC	8	NC	Common	9	+Vout	+Vout	10	-Vout	-Vout	16	+Vin	+Vin
Pin	Single Output	Dual Output																						
1	-Vin	-Vin																						
7	NC	NC																						
8	NC	Common																						
9	+Vout	+Vout																						
10	-Vout	-Vout																						
16	+Vin	+Vin																						

Physical Characteristics

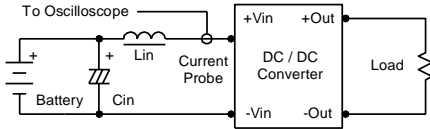
Case Size	: 23.8x13.4x8.6mm (0.94x0.53x0.34 inches)
Case Material	: Non-Conductive Black Plastic (flammability to UL 94V-0 rated)
Pin Material	: Copper Alloy with Gold Plate Over Nickel Subplate
Weight	: 5.1g

Test Setup

Input Reflected-Ripple Current Test Setup

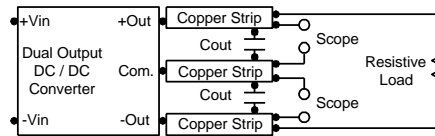
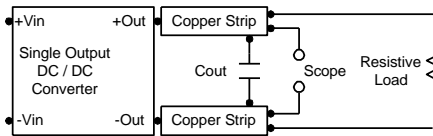
Input reflected-ripple current is measured with an inductor L_{in} (4.7 μ H) and C_{in} (220 μ F, ESR < 1.0 Ω at 100 KHz) to simulate source impedance. Capacitor C_{in} , offsets possible battery impedance.

Current ripple is measured at the input terminals of the module, measurement bandwidth is 0-500 KHz.



Peak-to-Peak Output Noise Measurement Test

Use a C_{out} 0.47 μ F ceramic capacitor. Scope measurement should be made by using a BNC socket, measurement bandwidth is 0-20 MHz. Position the load between 50 mm and 75 mm from the DC/DC Converter.



Technical Notes

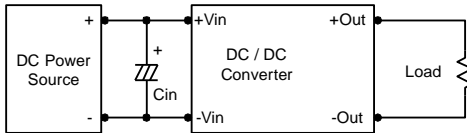
Maximum Capacitive Load

The MDHU100 series has limitation of maximum connected capacitance at the output. The power module may be operated in current limiting mode during start-up, affecting the ramp-up and the startup time. For optimum performance we recommend 100 μ F maximum capacitive load for dual outputs and 330 μ F capacitive load for single outputs. The maximum capacitance can be found in the data sheet.

Input Source Impedance

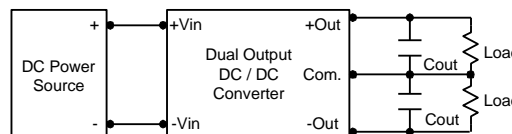
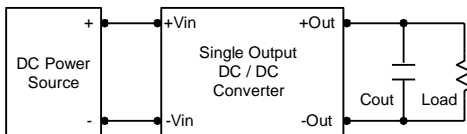
The power module should be connected to a low ac-impedance input source. Highly inductive source impedances can affect the stability of the power module. In applications where power is supplied over long lines and output loading is high, it may be necessary to use a capacitor at the input to ensure startup.

Capacitor mounted close to the power module helps ensure stability of the unit, it is recommended to use a good quality low Equivalent Series Resistance (ESR < 1.0 Ω at 100 KHz) capacitor of a 2.2 μ F for the 5V input devices, a 1.0 μ F for the 12V input devices and a 0.47 μ F for the 24V input devices.



Output Ripple Reduction

A good quality low ESR capacitor placed as close as practicable across the load will give the best ripple and noise performance. To reduce output ripple, it is recommended to use 3.3 μ F capacitors at the output.



Thermal Considerations

Many conditions affect the thermal performance of the power module, such as orientation, airflow over the module and board spacing. To avoid exceeding the maximum temperature rating of the components inside the power module, the case temperature must be kept below 105°C. The derating curves are determined from measurements obtained in a test setup.

