

FEATURES

- ▶ Industrial Standard DIP-24 Package
- ▶ Wide 2:1 Input Voltage Range
- ▶ Fully Regulated Output Voltage
- ▶ I/O Isolation 5000VAC with Reinforced Insulation, rated for 250Vrms Working Voltage
- ▶ Creepage & Clearance Distance meet 8mm
- ▶ Low Leakage Current < 2μA
- ▶ Operating Ambient Temp. Range -40°C to 92.5°C
- ▶ No Min. Load Requirement
- ▶ Overload/Voltage and Short Circuit Protection
- ▶ Designed-in Conducted EMI meets EN55011 Class A & FCC Level A
- ▶ Medical EMC Standard meets 4th Edition of EMI EN55011 and EMS EN60601-1-2
- ▶ Medical Safety meets 2xMOPP per 3rd Edition of IEC/EN 60601-1 & ANSI/AAMI ES60601-1 with CE Marking



PRODUCT OVERVIEW

The MINMAX MIW06M series is a new range of high performance 6W medical approved dc-dc converter within encapsulated DIP-24 package which specifically design for medical applications. There are 15 models available for input voltage of 12, 24, 48VDC with wide 2:1 input range and tight output voltage. The I/O isolation is specified for 5000VAC with reinforced insulation, which rated for 250Vrms working voltage. Further features include overload, short circuit protection, no min. load requirement, EMI conduction meets EN55011 Class A, low leakage current 2μA max. and operating ambient temp. range by -40°C to 92.5°C without derating by high efficiency up to 89%. MIW06M series conform to 4th edition medical EMC standard, medical safety approval meets 2xMOPP (Means Of Patient Protection) per 3rd edition of IEC/EN 60601-1 & ANSI/AAMI ES60601-1 and 8mm creepage and clearance. The MIW06M series offer a economical solution for demanding application in medical instrument requesting a certified supplementary and reinforced insulation system to comply with latest medical safety approval for 2xMOPP requirement.

Model Selection Guide

Model Number	Input Voltage (Range) VDC	Output Voltage VDC	Output Current Max. mA	Input Current		Over Voltage Protection VDC	Max. capacitive Load μF	Efficiency (typ.) @Max. Load %
				@Max. Load mA(typ.)	@No Load mA(typ.)			
MIW06-12S05M	12 (9 ~ 18)	5	1200	595	10	6.2	1500	84
MIW06-12S12M		12	500	575		15	260	87
MIW06-12S15M		15	400	581		18	210	86
MIW06-12D12M		±12	±250	575		±15	150#	87
MIW06-12D15M		±15	±200	575		±18	110#	87
MIW06-24S05M	24 (18 ~ 36)	5	1200	298	8	6.2	1500	84
MIW06-24S12M		12	500	287		15	260	87
MIW06-24S15M		15	400	287		18	210	87
MIW06-24D12M		±12	±250	291		±15	150#	86
MIW06-24D15M		±15	±200	287		±18	110#	87
MIW06-48S05M	48 (36 ~ 75)	5	1200	149	5	6.2	1500	84
MIW06-48S12M		12	500	144		15	260	87
MIW06-48S15M		15	400	140		18	210	89
MIW06-48D12M		±12	±250	144		±15	150#	87
MIW06-48D15M		±15	±200	142		±18	110#	88

For each output

Input Specifications

Parameter	Model	Min.	Typ.	Max.	Unit
Input Surge Voltage (1 sec. max.)	12V Input Models	-0.7	---	25	VDC
	24V Input Models	-0.7	---	50	
	48V Input Models	-0.7	---	100	
Start-Up Threshold Voltage	12V Input Models	---	---	9	
	24V Input Models	---	---	18	
	48V Input Models	---	---	36	
Under Voltage Shutdown	12V Input Models	---	8	---	
	24V Input Models	---	16	---	
	48V Input Models	---	34	---	
Start Up Time (Power On)	Nominal Vin and Constant Resistive Load	---	---	30	ms
Input Filter	All Models	Internal Pi Type			

Output Specifications

Parameter	Conditions	Min.	Typ.	Max.	Unit	
Output Voltage Setting Accuracy		---	---	±1.0	%Vnom.	
Output Voltage Balance	Dual Output, Balanced Loads	---	±0.5	±2.0	%	
Line Regulation	Vin=Min. to Max. @Full Load	---	---	±0.5	%	
Load Regulation	Io=0% to 100%	Single Output	---	---	±0.5	%
		Dual Output	---	---	±1.0	%
Load Cross Regulation (Dual Output)	Asymmetrical Load 25%/100% Full Load	---	---	±5.0	%	
Minimum Load	No minimum Load Requirement					
Ripple & Noise	0-20 MHz Bandwidth	Measured with a 1μF/25V MLCC	---	---	70	mV _{p-p}
Transient Recovery Time	25% Load Step Change	---	300	---	μsec	
Transient Response Deviation		---	±3	±5	%	
Temperature Coefficient		---	±0.01	---	%/°C	
Over Load Protection		---	150	---	%	
Short Circuit Protection	Hiccup Mode 0.5Hz typ., Automatic Recovery					

Isolation, Safety Standards

Parameter	Conditions	Min.	Typ.	Max.	Unit
I/O Isolation Voltage	60 Seconds Reinforced insulation, rated for 250Vrms working voltage	5000	---	---	VACrms
Leakage Current	240VAC, 60Hz	---	---	2	μA
I/O Isolation Resistance	500 VDC	10	---	---	GΩ
I/O Isolation Capacitance	100KHz, 1V	---	---	40	pF
Safety Standards	ANSI/AAMI ES60601-1, CAN/CSA-C22.2 No. 60601-1 IEC/EN 60601-1 3 rd Edition 2xMOPP				
Safety Approvals	ANSI/AAMI ES60601-1 2xMOPP recognition (UL certificate), IEC/EN 60601-1 3 rd Edition (CB-report)				

General Specifications

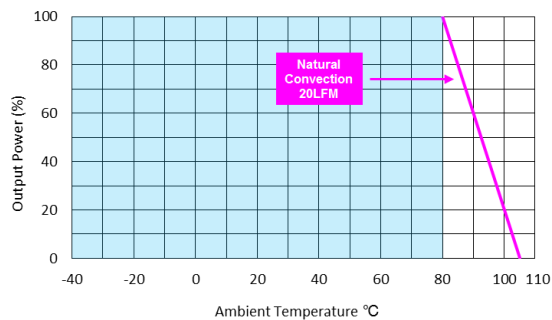
Parameter	Conditions	Min.	Typ.	Max.	Unit
Switching Frequency		---	330	---	kHz
MTBF(calculated)	MIL-HDBK-217F@25°C, Ground Benign	4,667,952	---	---	Hours

Environmental Specifications

Parameter	Conditions	Min.	Max.	Unit
Operating Ambient Temperature Range (See Power Derating Curve)	Natural Convection	-40	+92.5	°C
Case Temperature		---	+105	°C
Storage Temperature Range		-50	+125	°C
Humidity (non condensing)		---	95	% rel. H
Cooling	Natural Convection			
Lead Temperature (1.5mm from case for 10Sec.)		---	260	°C

EMC Specifications

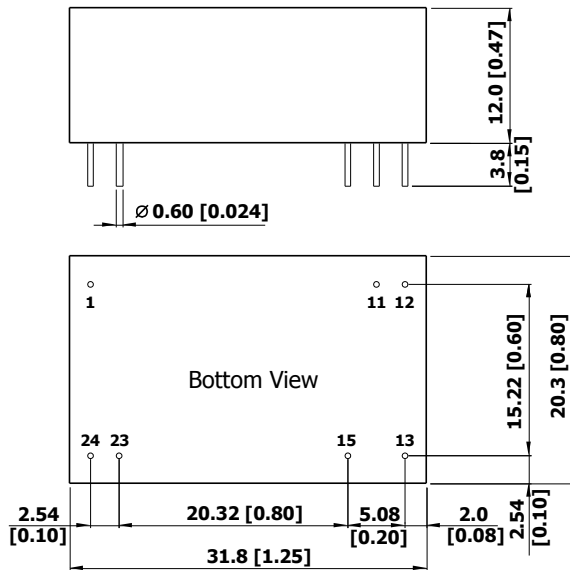
Parameter	Standards & Level		Performance
EMI	Conduction	EN55011, FCC part 15	Class A
EMS	EN60601-1-2 4 th		
	ESD	EN61000-4-2 Air ± 15kV , Contact ± 8kV	A
	Radiated immunity	EN61000-4-3 10V/m	A
	Fast transient (S)	EN61000-4-4 ±2kV	A
	Surge (S)	EN61000-4-5 ±2kV	A
	Conducted immunity	EN61000-4-6 10Vrms	A
	PFFM	EN61000-4-8 30A/m	A

Power Derating Curve

Notes

- Specifications typical at Ta=+25°C, resistive load, nominal input voltage and rated output current unless otherwise noted.
- Transient recovery time is measured to within 1% error band for a step change in output load of 75% to 100%
- We recommend to protect the converter by a slow blow fuse in the input supply line.
- Other input and output voltage may be available, please contact factory.
- To meet EN61000-4-4 & EN61000-4-5 an external capacitor across the input pins is required.
Suggested capacitor: 12XXX: CHEMI-CON KY Series 470µF/100V
24XXX: CHEMI-CON KY Series 330µF/100V
48XXX: CHEMI-CON KY Series 220µF/100V
- That "natural convection" is about 20LFM but is not equal to still air (0 LFM).
- Specifications are subject to change without notice.

Package Specifications

Mechanical Dimensions



Pin Connections

Pin	Single Output	Dual Output
1	+Vin	+Vin
11	No Pin	Common
12	-Vout	No Pin
13	+Vout	-Vout
15	No Pin	+Vout
23	-Vin	-Vin
24	-Vin	-Vin

- ▶ All dimensions in mm (inches)
- ▶ Tolerance: X.X±0.5 (X.XX±0.02)
X.XX±0.25 (X.XXX±0.01)
- ▶ Pin diameter $\varnothing 0.5 \pm 0.05$ (0.02±0.002)

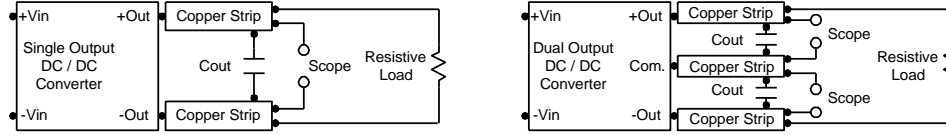
Physical Characteristics

Case Size	: 31.8x20.3x12.0mm (1.25x0.80x0.47 inches)
Case Material	: Non-Conductive Black Plastic (flammability to UL 94V-0 rated)
Pin Material	: Tinned Copper
Weight	: 15.5g

Test Setup

Peak-to-Peak Output Noise Measurement Test

Refer to the output specifications or add 4.7 μ F capacitor if the output specifications undefine Cout. Scope measurement should be made by using a BNC socket, measurement bandwidth is 0-20 MHz. Position the load between 50 mm and 75 mm from the DC/DC Converter.



Technical Notes

Overload Protection

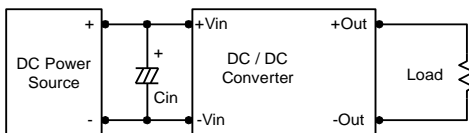
To provide hiccup mode protection in a fault (output overload) condition, the unit is equipped with internal current limiting circuitry and can endure overload for an unlimited duration.

Overvoltage Protection

The output overvoltage clamp consists of control circuitry, which is independent of the primary regulation loop, that monitors the voltage on the output terminals. The control loop of the clamp has a higher voltage set point than the primary loop. This provides a redundant voltage control that reduces the risk of output overvoltage. The OVP level can be found in the output data.

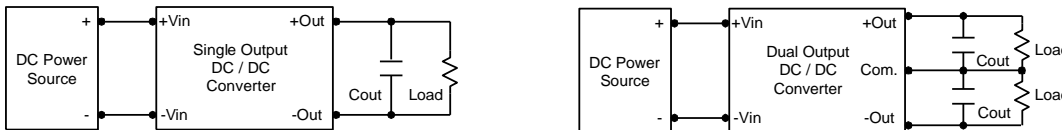
Input Source Impedance

The power module should be connected to a low ac-impedance input source. Highly inductive source impedances can affect the stability of the power module. In applications where power is supplied over long lines and output loading is high, it may be necessary to use a capacitor on the input to insure startup. By using a good quality low Equivalent Series Resistance (ESR < 1.0 Ω at 100 kHz) capacitor of a 10 μ F for the 12V input devices and a 4.7 μ F for the 24V input devices and a 2.2 μ F for the 48V devices, capacitor mounted close to the power module helps ensure stability of the unit.



Output Ripple Reduction

A good quality low ESR capacitor placed as close as practicable across the load will give the best ripple and noise performance. To reduce output ripple, it is recommended to use 4.7 μ F capacitors at the output.



Maximum Capacitive Load

The MIW06M series has limitation of maximum connected capacitance on the output. The power module may operate in current limiting mode during start-up, affecting the ramp-up and the startup time. Connect capacitors at the point of load for best performance. The maximum capacitance can be found in the data sheet.

Thermal Considerations

Many conditions affect the thermal performance of the power module, such as orientation, airflow over the module and board spacing. To avoid exceeding the maximum temperature rating of the components inside the power module, the case temperature must be kept below 105 $^{\circ}$ C. The derating curves are determined from measurements obtained in a test setup.

